



# mateenbar 60™

Durable Fiberglass Rebar

Mateenbar60™ fiberglass rebar is corrosion-free, chemical-resistant, and designed for a 100-year service life with no maintenance required: outlasting steel in even the harshest environments. Mateenbar60™ redefines concrete reinforcement for large-scale infrastructure. Its lightweight, rustproof, and UV-resistant design simplifies transport, handling, and installation while reducing labor costs and boosting productivity. Paired with stocked and made-to-order Blackbends™, Mateenbar60™ delivers lasting performance for bridges, multi-story buildings, seawalls, and other demanding structural projects.

# Build Stronger. Faster. Better.

## Trusted Performance & Built to Last

Engineers and project managers rely on Mateenbar60™ for its consistency and proven durability in critical infrastructure. Factory-tested and backed by decades of global use, it removes the risk of corrosion-related failures and costly maintenance cycles. Its reliability ensures predictable performance over the full life of a project, giving decision-makers the confidence to design and build with long-term resilience in mind.



**Stronger**



**Lighter**



**Rustproof**



**Whole of Life Savings**



**Meets or Exceeds Standards**

## Meets or Exceeds Standards

Mateenbar60™ is engineered to meet or exceed key industry standards, codes, and specifications, giving engineers and project managers confidence in its performance, safety, and compliance. Designed for optimal results across construction projects, Mateenbar60™ supports a streamlined approval process to simplify permitting and reduce delays related to compliance checks.

- MATERIAL STANDARDS:** CSA-S807 Grade III, ASTM D7957 & ASTM D8505
- RESIDENTIAL & COMMERCIAL CONCRETE:** ICC EER-5548, ICC ESR-5548, ACI 332 & ACI 440.11
- MASONRY:** TMS 402/602-22

## Typical Concrete Applications

TRANSPORTATION STRUCTURES	MARINE & COASTAL	BUILDINGS	HIGH VOLTAGE & ELECTRO-MAGNETIC FIELDS
<ul style="list-style-type: none"> <li>• Bridge Decks</li> <li>• Traffic Barriers</li> <li>• Civil Roadways</li> <li>• Overpasses</li> <li>• Rail Systems</li> </ul>	<ul style="list-style-type: none"> <li>• Seawalls</li> <li>• Piles</li> <li>• Coastal Bridges</li> <li>• Boat Ramps</li> <li>• Offshore Structures</li> </ul>	<ul style="list-style-type: none"> <li>• Balconies</li> <li>• Wall Panels</li> <li>• Foundations</li> <li>• Stadiums</li> <li>• Columns</li> <li>• Beams</li> </ul>	<ul style="list-style-type: none"> <li>• Light &amp; Heavy Rail</li> <li>• MRI Rooms</li> <li>• Data Centers</li> <li>• Power Plant Facilities</li> <li>• Compass Calibration Pads</li> </ul>



## Straight Bars Technical Data

DESIGNATED DIAMETER	GUARANTEED ULTIMATE TENSILE STRENGTH		GUARANTEED TENSILE FORCE		WEIGHT	NOMINAL CROSS-SECTIONAL AREA		OUTER DIAMETER (INCLUDING RIBS)	
	mm	MPa	ksi	kN		kip	g/m	mm <sup>2</sup>	in <sup>2</sup>
10	1000	145.5	71	16.0	189	71	0.110	10.9	0.429
15	912	131.6	181.5	40.8	481	199	0.310	17.2	0.677
20	898	130.2	254.9	57.3	702	284	0.440	20.6	0.811
25	828	120.1	422.1	94.9	1228	510	0.790	27.4	1.079
30	793	115.0	511.5	115.0	1595	645	1.000	31.4	1.236
35	753	109.2	617.0	138.7	1982	819	1.270	35.0	1.378

FIBER MASS CONTENT	MOISTURE ABSORPTION IN 24 H AT 50°C [122°F]	MOISTURE ABSORPTION TO SATURATION AT 50°C [122°F]	ELASTIC MODULUS		MEAN GLASS TRANSITION TEMPERATURE (DSC)		MEAN APPARENT HORIZONTAL SHEAR		MEAN TRANSVERSE SHEAR STRENGTH	
			MPa	ksi	°F	°C	psi	MPa	ksi	MPa
%	%	%	GPa	ksi	°F	°C	psi	MPa	ksi	MPa
≥75	≤0.1	<0.5	60	8700	≥212	≥100	≥6525	≥45	≥26.1	≥180

Primary materials: vinylester and corrosion resistant E-CR glass.  
Bond strength exceeds CSA-S807 Grade III, ASTM D7957, and D8505.  
For details on Greenbar2X™ and any related bends product, refer to those specific product brochures.

## Packaging

Manufactured and shipped in the USA. Master bundles are available in standard sizes\*. Prefabricated bends and additional bar size weights are available upon request.

BAR SIZE	WEIGHT PER 20-FT BAR (lb)	# OF 20' BARS PER BUNDLE	WEIGHT PER MASTER BUNDLE (lb)	NO. OF BARS IN A FULL TRUCK LOAD (FTL)	NET WEIGHT PER FTL (lb)
10	2.54	500	1,270	17,500	44,450
15	6.46	250	1,615	6,750	43,605

\*Estimates only. Dunnage or other packaging except the bundle straps are not included in the net weight.

## Storage & Handling

Mateenbar60™ is outdoor-durable, though oxidation and UV exposure may cause surface discoloration, fading, or chalking. These effects are purely cosmetic and do not impact performance. For extended sunlight exposure, using a protective cover is recommended.

When handling and installing, use a fine-blade saw, carbide grit blade saw, grinder, or diamond blade for cutting; sealing ends is unnecessary. Space chairs properly for adequate concrete cover and use standard tying methods. Ensure concrete cover exceeds two bar diameters to prevent thermal cracking, and follow guidelines for general reinforcement practices.

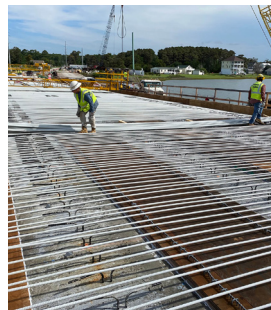
Ready To Build?



Contact Us Today.

Mateenbar Inc.

151 Whitehall Drive, Markham, ON, Canada, L3R 9T1  
+1 (416) 352 8700 mateenbar.com



 mateenbar®

Leading the World in Durable Fiberglass Rebar



Over 30 Years  
Proven Global Service

This information and data contained herein is offered solely as a guide in the selection of product. We believe this information to be reliable but do not guarantee its applicability to the user's process or assume any responsibility or liability arising out of its use or performance. The user agrees to be responsible for thoroughly testing any application of the product to determine its suitability. Because of numerous factors affecting results, we make no warranty of any kind, express or implied, including those of merchantability and fitness for a particular purpose. Statements in this publication shall not be construed as representations or warranties or as inducements to infringe on any patent or violate any law, safety code, or insurance regulation. We reserve the right to modify this document without prior notice. **Mateenbar60™ is manufactured by Mateenbar Composite Reinforcements, LLC.**