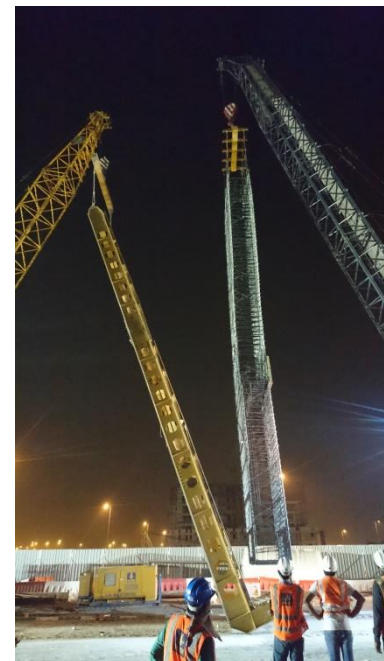


cuttable • non-corrosive • non-magnetic • non-conductive • high strength • light weight

## Expolink 2020, Dubai Redline Extension, UAE

**mateenbar™** was used in the diaphragm walls as cuttable temporary reinforcement for the breakthrough section.

The cuttable properties of **mateenbar™** keeps the TBM moving without delays speeding up the construction time.



**Client:** RTA  
**Consultant:** CH2M / Parsons  
**Contractor:** Acciona Gulermak CWJV  
**Sub-Contractor:** Bauer  
**Location:** Dubai, UAE

UAE + 971 4 880 9533 | [www.mateenbar.com](http://www.mateenbar.com)

New Zealand +64 6 867 8282 | [sales@mateenbar.com](mailto:sales@mateenbar.com) 

**pultron**  
COMPOSITES 

Mateen™ range effective March 2008. Pultron™ reserves the right to adjust products without notification.  
© Copyright Pultron™ Composites Ltd. All rights reserved. This supersedes all previous versions. Version 20/06/2017